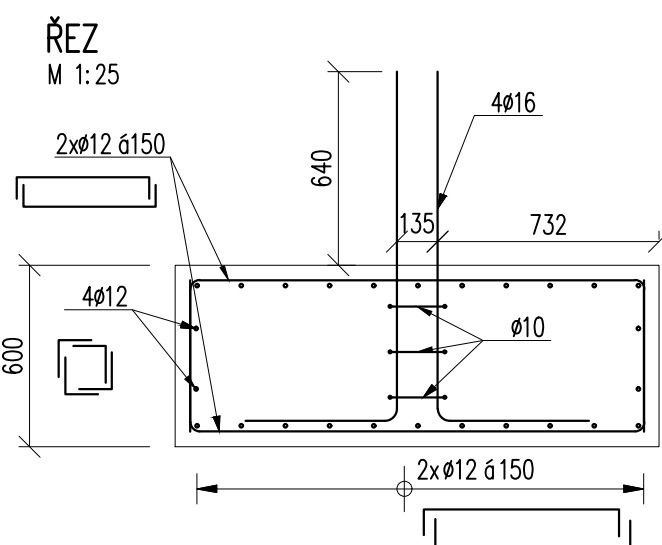
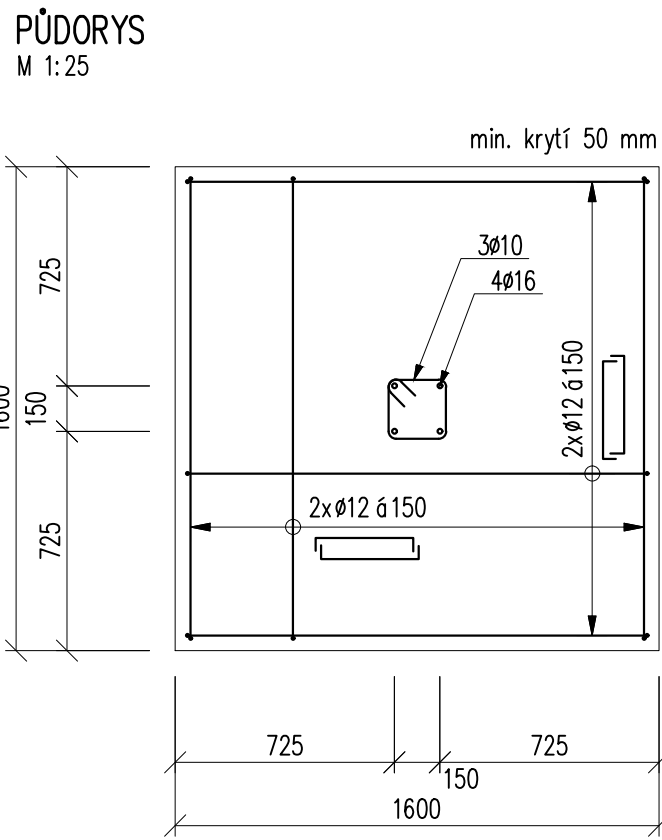
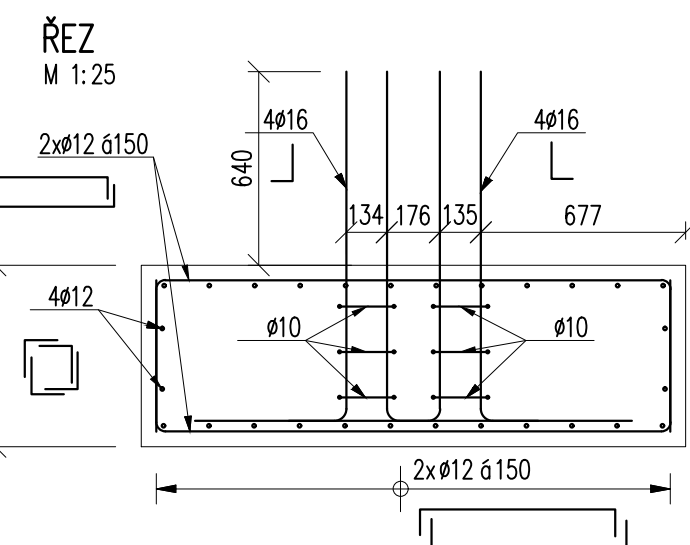
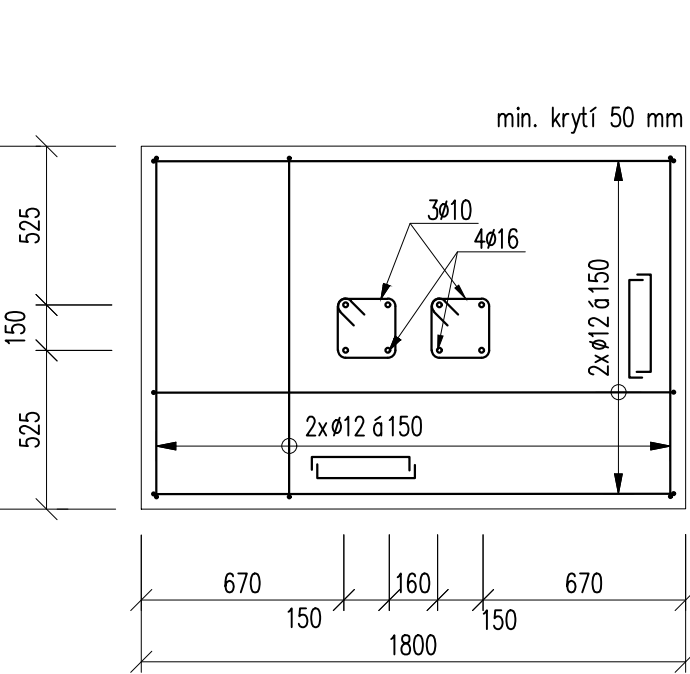


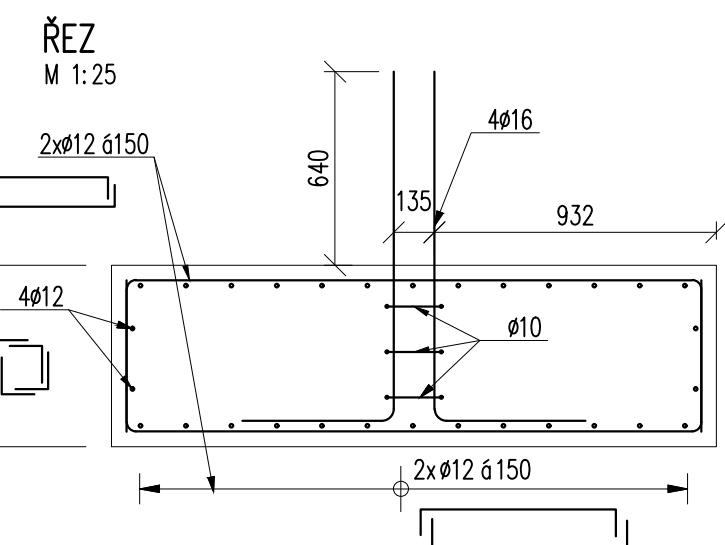
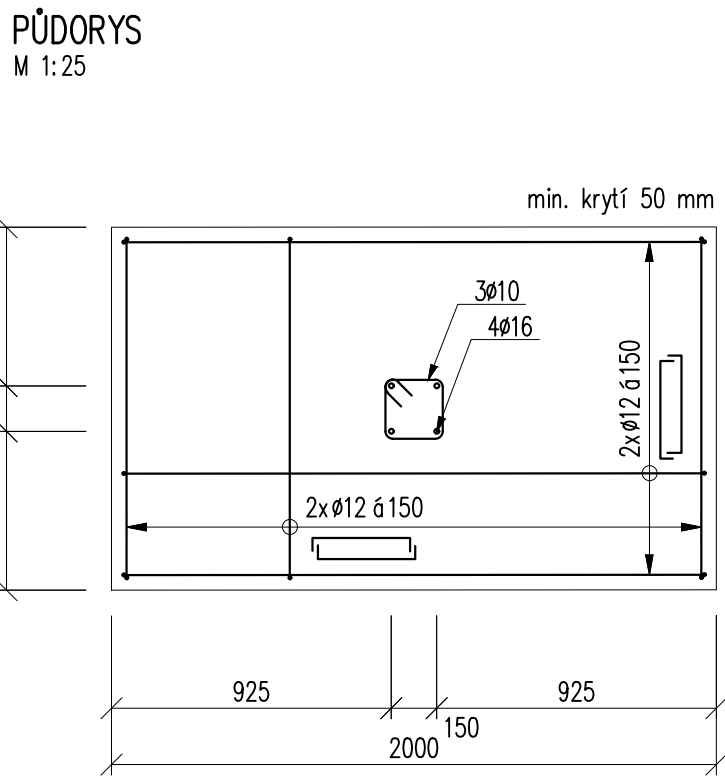
PATKA P1 ... 7 ks  
PATKA P2 ... 2 ks



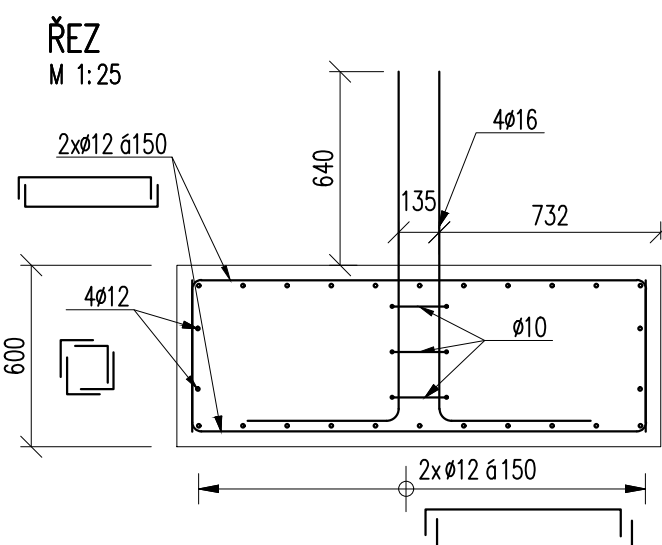
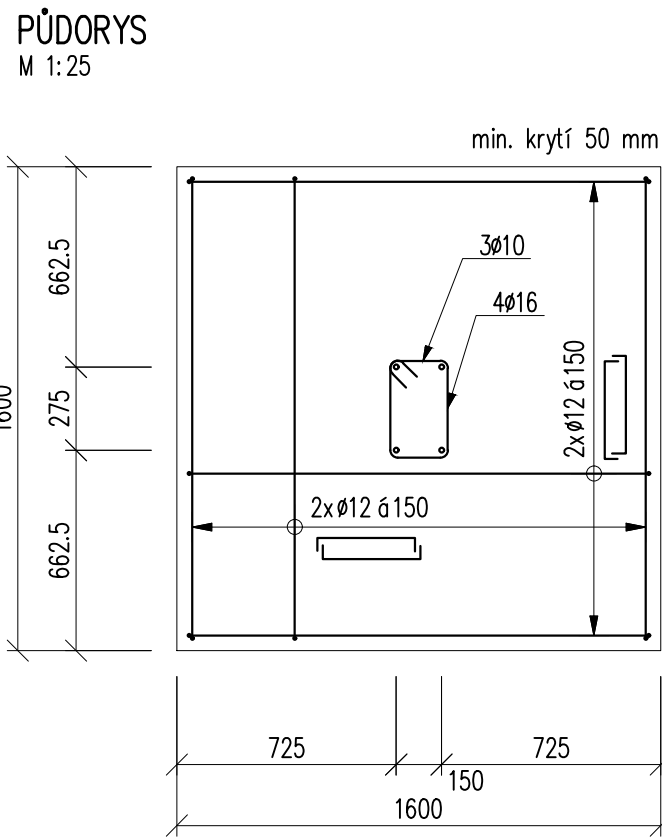
PATKA P3 ... 2 ks



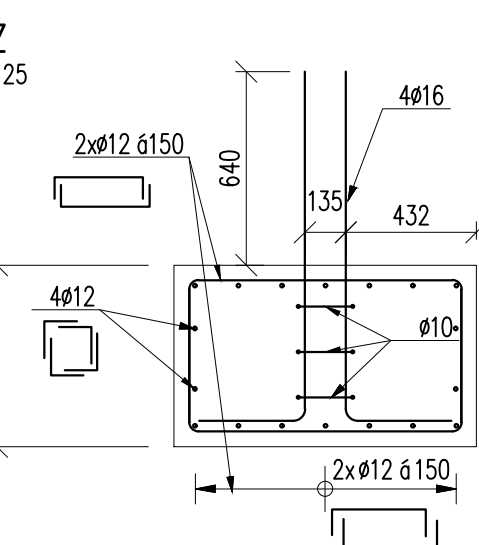
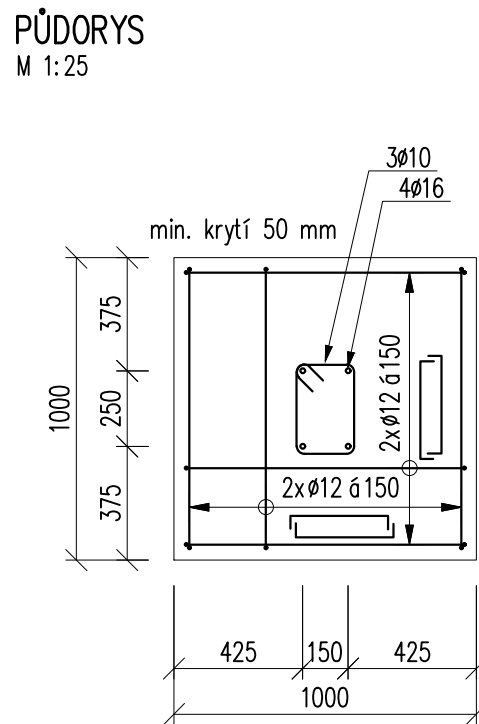
PATKA P4 ... 10 ks



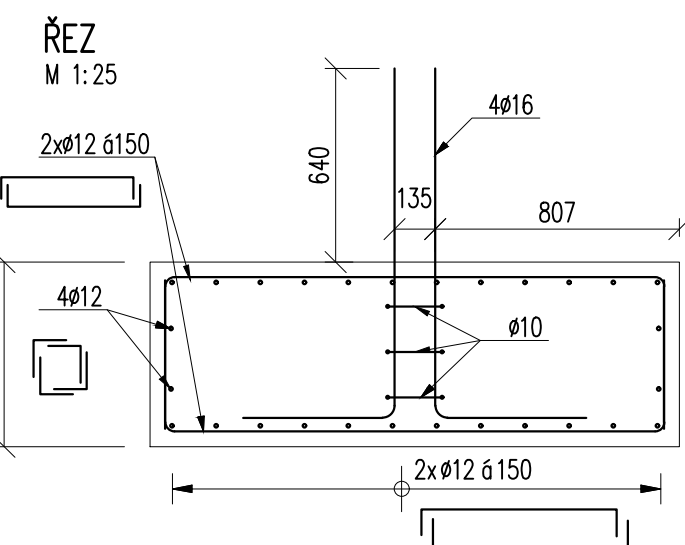
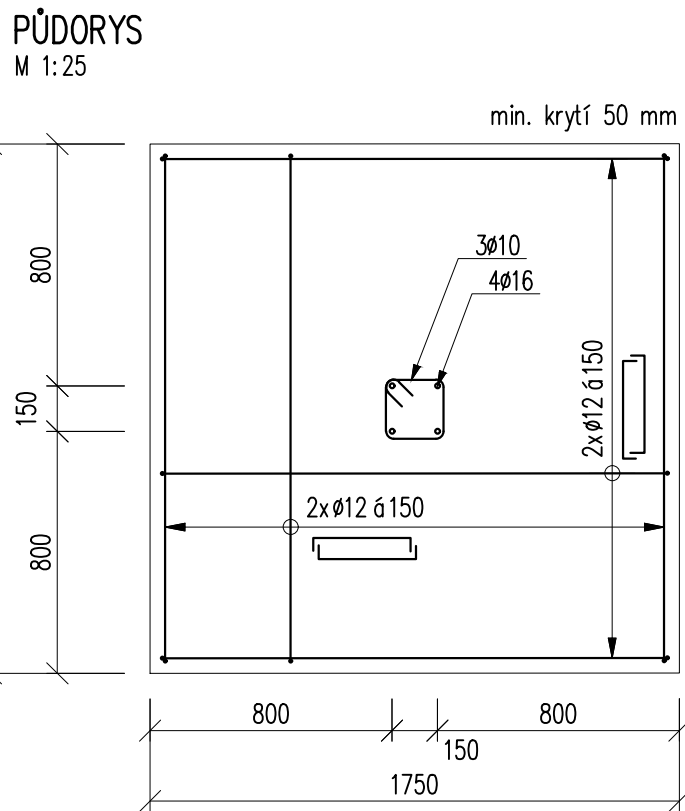
PATKA P5 ... 2 ks



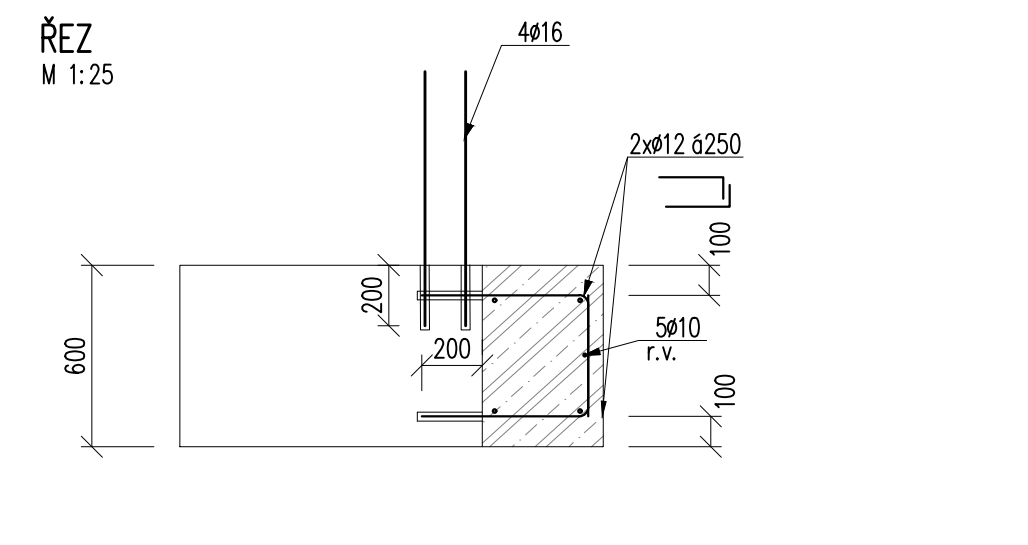
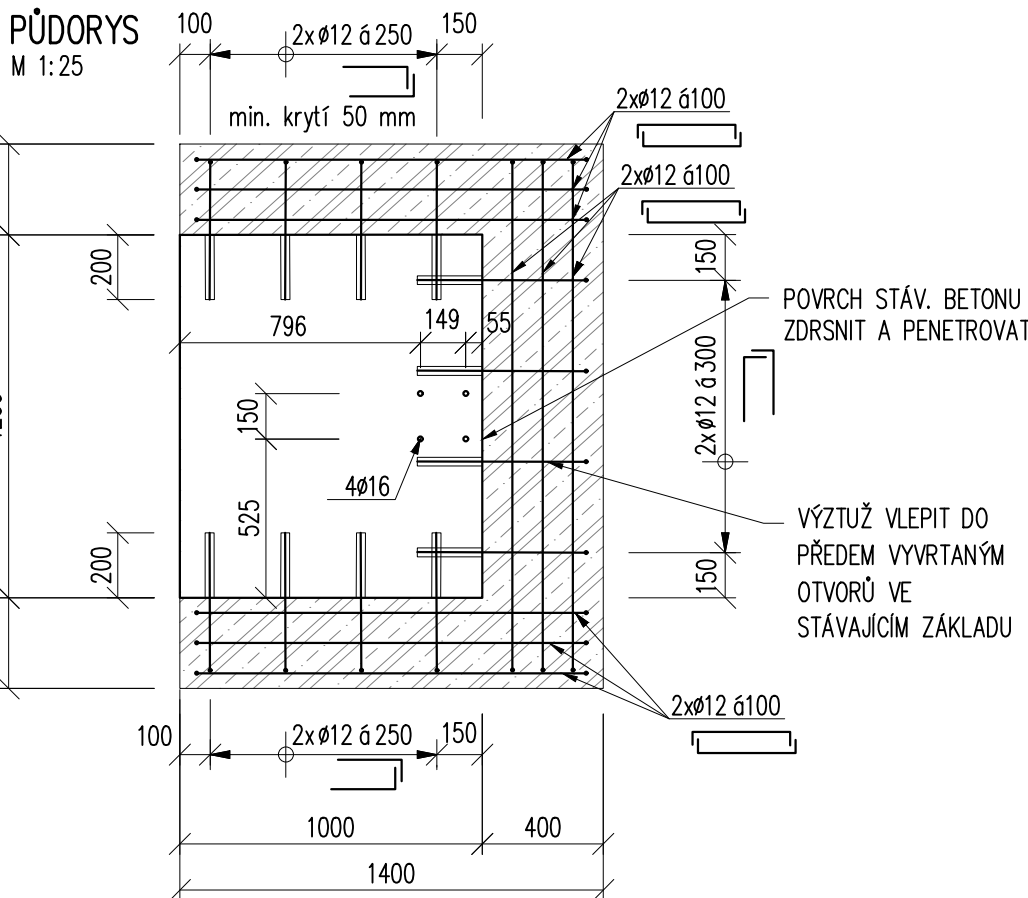
PATKA P6 ... 1 ks



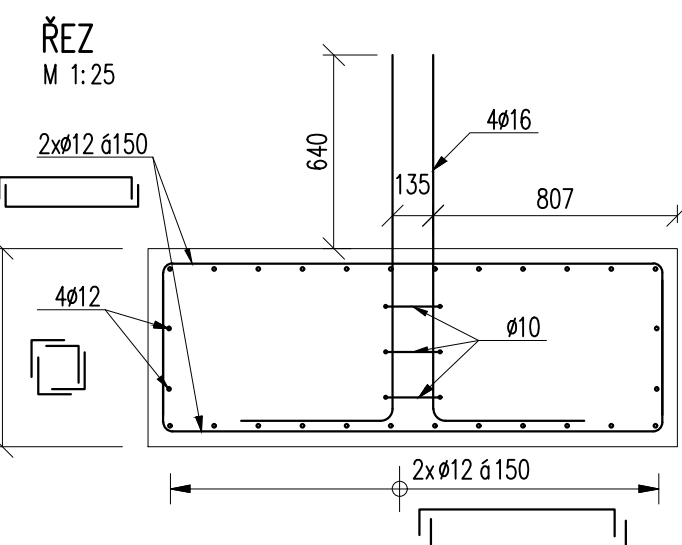
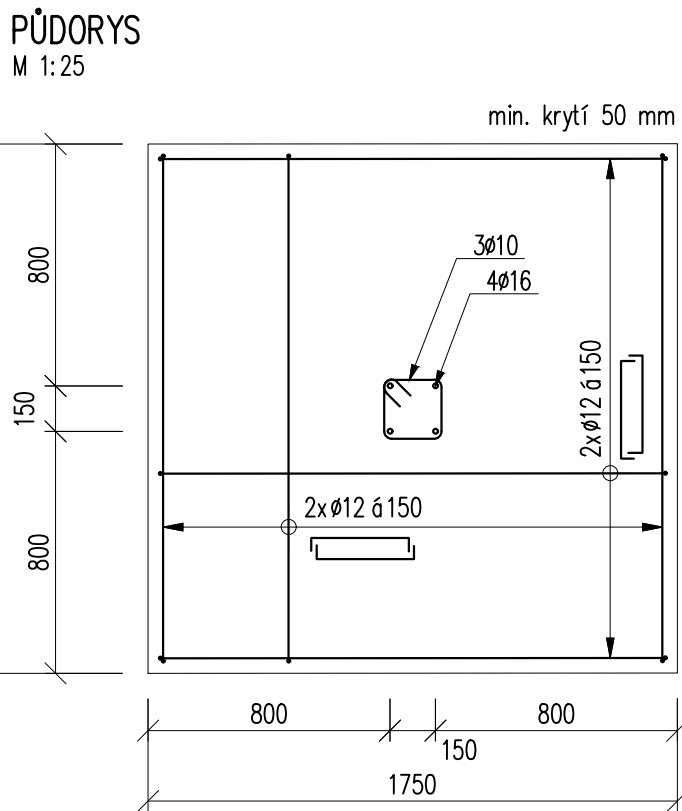
PATKA P7 ... 2 ks



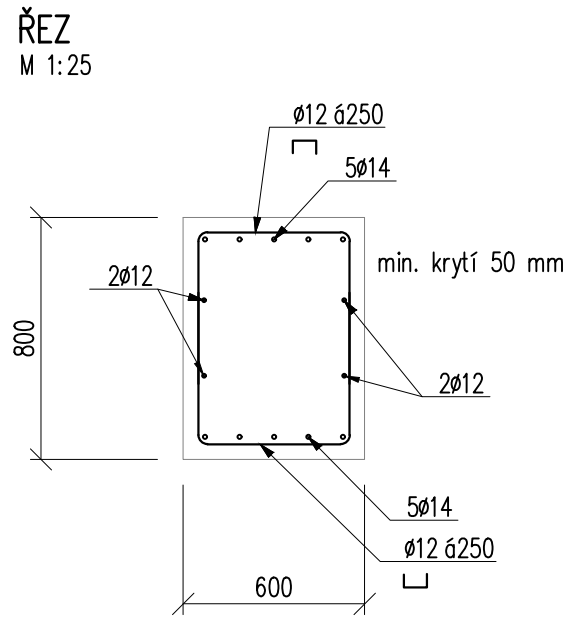
PATKA P8 ... 2 ks



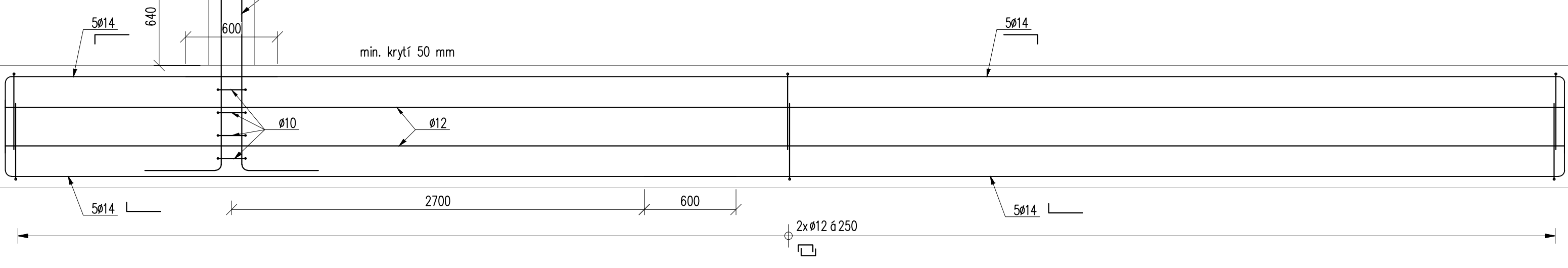
PATKA P9 ... 2 ks



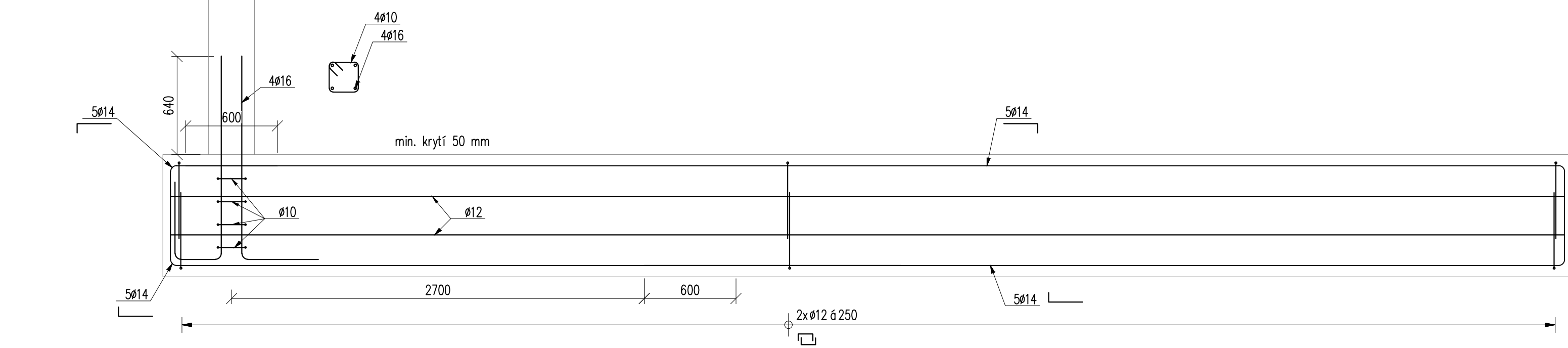
ZP1 ... 10,3 bm  
ZP3 ... 9,22 bm  
ZP4 ... 7,645 bm



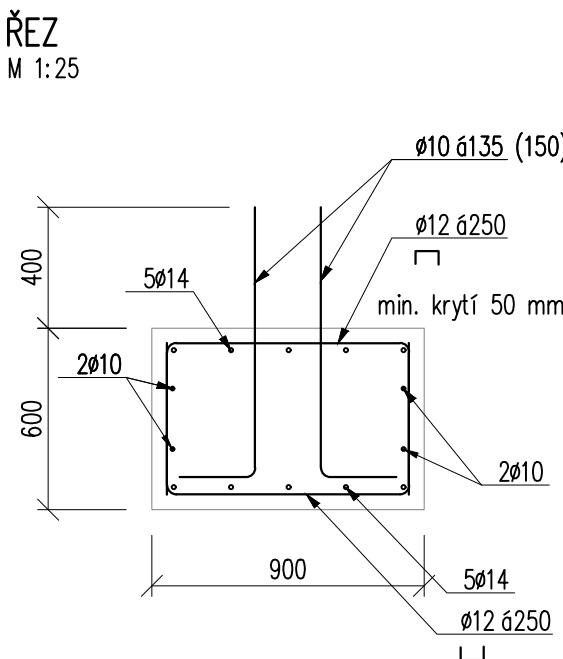
ZP1  
POHLED BOČNÍ  
M 1:25



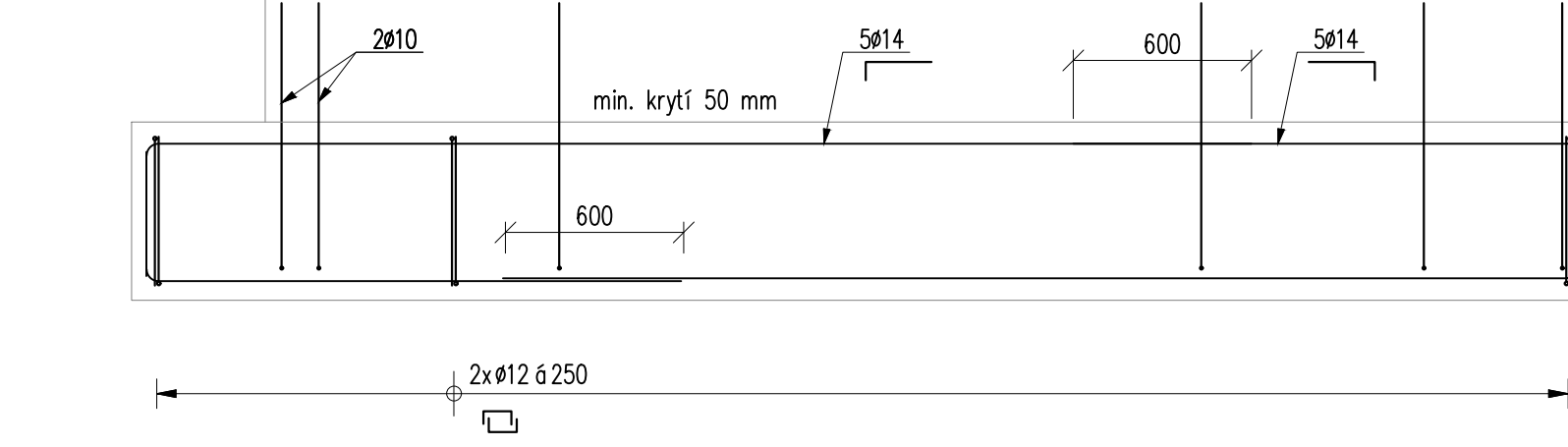
ZP3  
POHLED BOČNÍ  
M 1:25



ZP2 ... 4,92 bm

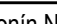


ZP2  
POHLED BOČNÍ  
M 1:25



ODHAD VÝZTUŽE PATKY cca 3900 kg  
ODHAD VÝZTUŽE PASY cca 1140 kg  
BETON základové patky a pasy C25/30 – XC2  
min. krytí 50 mm

OCEL B 500B ČSN EN 10027-1  
NAVRHOVÁNO DLE ČSN EN 1992

generální projektant akce:		Ing. arch. Antonín Novák		 <b>STABIL</b>
zodp. projektant:		Ing. Petr Daniel		
investor: Statutární město Brno, městská část Brno-střed Dominikánská 2, 601 69 Brno				
stavba: Sportovní a rekreační areál Kraví hora v Brně - III. etapa rekonstrukce a dostavby - rekonstrukce provozní budovy - varianta B				stupeň dokumentace: DPS datum: 12 / 2017
díl: D1.2.2 Stavebně konstrukční část				formát: 10 x A4 měřítko: 1 : 25
obsah: ZÁKLADOVÉ PATKY A PASY - SCHEMA VÝZTUŽE				číslo výkresu: D1.2.2.13